

44/159

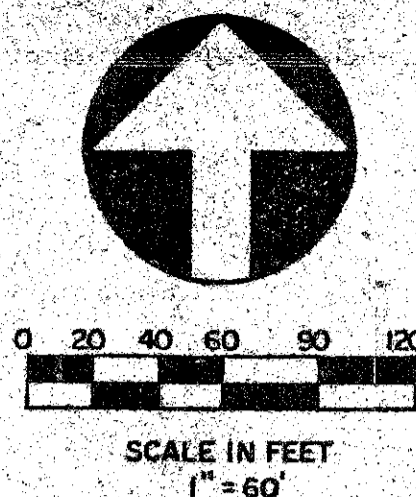
# LUCERNE LAKES GOLF COLONY

A PORTION OF LUCERNE LAKES PLANNED UNIT DEVELOPMENT.

BEING A REPLAT OF A PORTION OF BLOCK 29 OF PALM BEACH FARMS COMPANY PLAT NO. 3 PLAT BOOK 2, AT PAGES 45 THRU 54, PUBLIC RECORDS OF PALM BEACH COUNTY, FLORIDA, BEING IN SECTION 28, TOWNSHIP 44 S, RANGE 42 E, PALM BEACH COUNTY FLORIDA.

JULY, 1982

SHEET 2 OF 2



NO	DELTA	RADIUS	LENGTH
C1	26°34'00"	272.68	126.44
C2	26°31'30"	179.10	82.39
C3	17°57'15"	336.64	78.64
C4	8°12'15"	513.28	74.36
C5	13°35'45"	519.28	123.23
C6	90°00'00"	5.00	7.85
C7	90°00'00"	5.00	7.85
C8	8°08'46"	506.78	72.05
C9	13°39'16"	506.78	120.77
C10	12°26'34"	272.14	59.10
C11	90°00'00"	5.00	7.85
C12	89°06'00"	5.00	7.51
C13	82°01'42"	9.43	12.08
C14	90°00'00"	5.00	7.85
C15	16°13'28"	247.14	69.88
C16	90°35'30"	5.00	7.91
C17	89°43'59"	5.00	7.83
C18	1°52'23"	531.78	17.39
C19	91°48'18"	20.00	32.05
C20	90°00'00"	5.00	7.85
C21	90°00'00"	5.00	7.85
C22	90°00'00"	5.00	7.85
C23	180°00'00"	7.50	23.56
C24	90°00'00"	5.00	7.85
C25	90°00'00"	5.00	7.85

P.U.D. DATA

GROSS AREA OF PROJECT	24.3	AC.
TOTAL NUMBER OF DWELLING UNITS (D.U.)	448	
GROSS DENSITY	18.4	D.U./AC.
BUILDING COVERAGE	4.5	AC.
UNCOVERED PARKING & ACCESS ROADS	5.7	AC.
1/2 RECREATION AREA	0.5	AC.
ROAD RIGHT-OF-WAYS	3.4	AC.
OPEN SPACE		
1/2 RECREATION AREA	0.5	AC.
REMAINING AREA	9.7	AC.

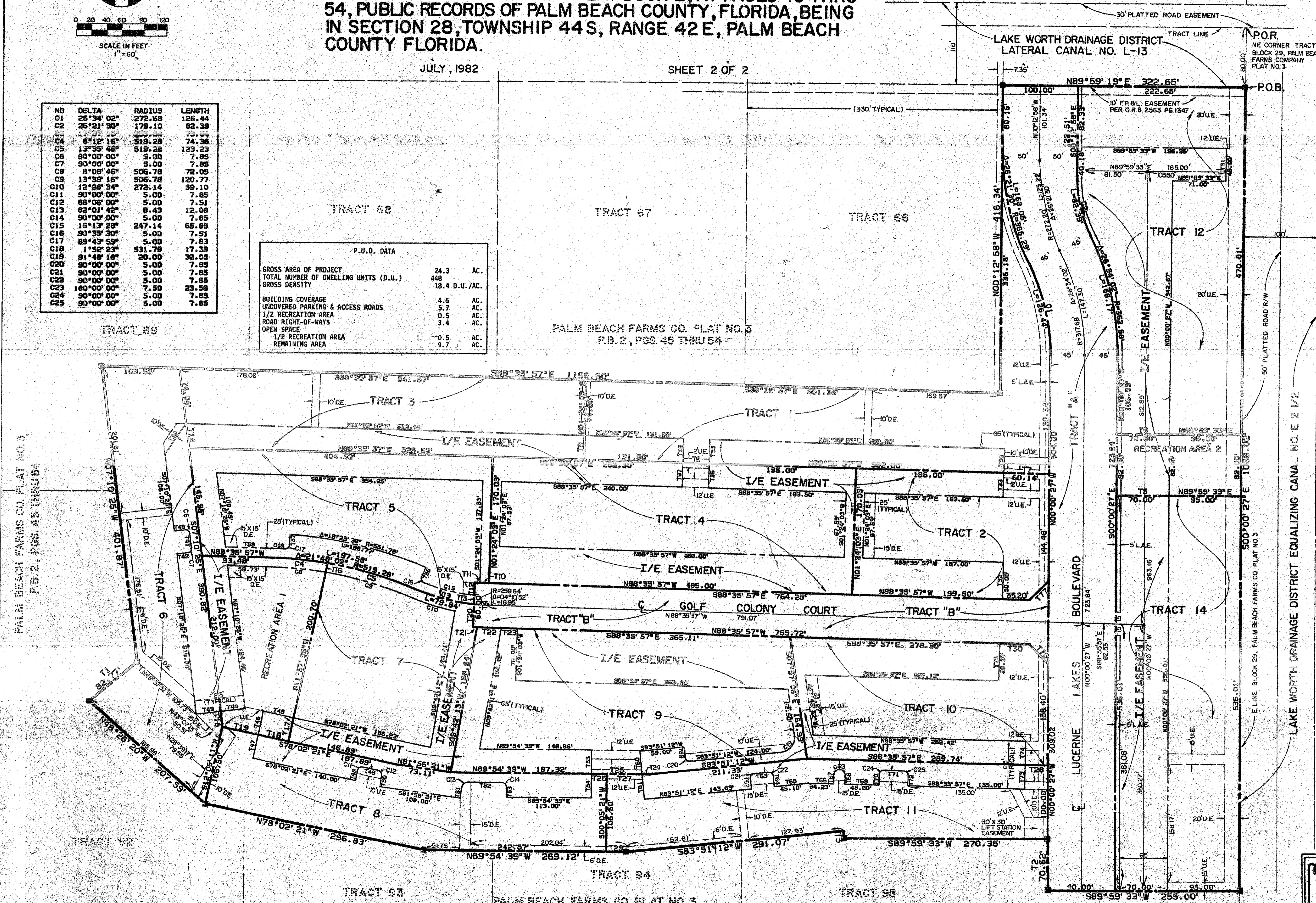
159

STATE OF FLORIDA  
COUNTY OF PALM BEACH

THIS PLAT WAS FILED FOR RECORD AT THIS DAY OF AD, 1982 AND DULY RECORDED IN PLAT BOOK ON PAGES AND

JOHN B. DUNKLE, CLERK  
CIRCUIT COURT BY: DC.

NO	BEARING	DISTANCE
T1	N50°01'49"E	82.77
T2	N00°00'27"W	70.62
T3	N06°20'23"W	10.00
T4	N01°24'03"E	60.00
T5	N89°59'33"E	70.00
T6	N89°59'33"E	70.00
T7	S88°35'57"E	60.14
T8	N88°35'57"W	36.50
T9	N01°24'03"E	32.50
T10	N88°35'57"E	12.50
T11	N88°35'57"W	6.43
T12	S01°24'03"W	16.77
T13	S01°24'03"W	12.54
T14	N07°10'25"W	32.87
T15	S07°10'25"W	21.11
T16	S11°57'39"W	12.51
T17	S11°57'39"W	32.50
T18	N78°02'21"W	41.00
T19	N78°02'21"W	48.31
T20	S01°24'03"W	36.50
T21	S88°35'57"E	6.44
T22	S88°35'57"E	32.84
T23	S88°35'57"E	30.47
T24	N88°35'57"W	10.27
T25	N88°35'57"W	67.88
T26	S88°35'57"E	36.83
T27	S88°35'57"E	47.88
T28	S88°35'57"E	36.83
T29	S88°35'57"E	36.83
T30	S88°35'57"E	59.77
T31	N00°00'27"W	48.88
T32	N01°24'03"E	32.50
T33	N01°24'03"E	32.50
T34	N01°24'03"E	32.50
T35	S01°24'03"W	32.50
T36	S01°24'03"W	32.50
T37	N01°24'03"E	32.50
T38	N01°24'03"E	32.50
T39	S34°15'35"W	49.11
T40	N82°49'35"E	15.00
T41	S07°10'25"W	21.88
T42	S88°49'35"E	15.00
T43	N88°49'35"E	32.50
T44	N88°49'35"E	32.50
T45	N78°02'21"W	41.00
T46	S11°57'39"W	32.50
T47	S11°57'39"W	32.50
T48	N11°57'39"E	15.00
T49	S78°02'21"E	21.92
T50	S08°03'39"W	16.47
T51	N08°03'39"E	15.03
T52	S89°54'39"E	45.88
T53	S00°05'21"E	15.00
T54	N00°05'21"E	32.50
T55	N00°05'21"E	32.50
T56	N23°12'06"E	19.00
T57	S03°48'28"E	15.00
T58	N88°35'57"E	62.50
T59	N06°08'48"W	15.00
T60	S06°08'48"W	31.38
T61	S06°08'48"W	39.88
T62	N06°08'48"E	15.00
T63	N06°08'48"E	29.67
T64	S06°08'48"E	15.00
T65	N83°51'12"E	45.10
T66	S88°35'57"E	34.10
T67	N01°24'03"E	12.50
T68	S01°24'03"W	12.50
T69	S88°35'57"E	45.00
T70	N01°24'03"E	15.00
T71	S88°35'57"E	28.36
T72	S01°24'03"W	15.00
T73	N01°24'03"E	32.50
T74	N01°24'03"E	32.50
T75	N01°24'03"E	50.00
T76	S44°18'12"E	34.92
T77	N45°41'48"E	35.75



PALM BEACH FARMS CO. PLAT NO. 3  
P.B. 2, PGS. 45 THRU 54

PALM BEACH FARMS CO. PLAT NO. 3  
P.B. 2, PGS. 45 THRU 54

NOTE:  
I/E EASEMENT DENOTES INGRESS/EGRESS EASEMENT  
(SEE DEDICATION NO. 1)

Meridian  
Surveying and Mapping Inc.  
2321 So. Congress Ave.  
Suite 1-2  
West Palm Beach, Florida 33406

LUCERNE LAKES GOLF COLONY  
JULY, 1982  
162-002

0277-000